



**2017 US ALBACORE ASSOCIATION
National Sailing Championship
October 7-9, 2017**

SAILING INSTRUCTIONS

1. RULES:

The regatta will be governed by the rules as defined in the current Racing Rules of Sailing (RRS) for 2017-2020 and these Sailing Instructions.

2. ELIGIBILITY AND ENTRIES:

See the NOR

3. NOTICES TO COMPETITORS:

Notices to competitors will be posted on the clubhouse window near the flagpole.

4. SIGNALS MADE ASHORE and ON THE WATER:

Signals made ashore will be displayed from the flagpole in front of the clubhouse. If a postponement (AP) is signaled ashore, the warning signal will be made not less than 30 minutes after AP is lowered. Signals such as designating a racing area, choice of sound-signal starting system, or number of races may be given on the water by displaying flag L with one sound.

5. SCHEDULE:

The warning signal for the first race will be at 1330 on Saturday, 1000 on Sunday and 1000 on Monday. The number of scheduled races will be eight with 3 or more on Saturday and Sunday with 2 on Monday. No warning signal will be given after 1300 on Monday, October 9th.

6. CLASS FLAGS:

The class flag will show the class insignia or as described at the Skipper's Meeting.

7. THE COURSES:

7.1 Location: The location of the racing area will be selected by the Race Committee for each race day depending on weather conditions.

7.2 Start and Finish: The start line will be to leeward of the leeward turning mark. The start line will be between the yellow or orange flag on the signal boat and a red ball laid to its port side. The finish line will be to windward of the weather turning mark, between the yellow or orange flag and a red ball laid to the port side of the signal boat. In the event the course is shortened, the finish line will be between the "S" flag and a nearby mark on the course.

7.3 Course Designation: Courses will be Windward-Leeward, Triangle or Triangle-Windward-Leeward designated by a letter "W", "T" or "O" (respectively) posted on the starboard side of the signal boat. The number of legs will be designated after the letter (ie. "W3" indicates windward, leeward, then finish to windward). The course will be posted prior to the Preparatory signal for the start. Examples shown in Appendix below.

7.4 Required Side: All turning marks will be left to port.

7.5 Course Configuration: The Appendix shows mark configuration and possible courses.

7.6 Marks: Turning marks are orange cylinders and change of course marks is a tetrahedron. Mark types may be changed at the skippers meeting, if necessary.

8. TIME LIMIT

The time limit for each race will be 2 hours for the first boat to finish. Boats finishing more than 30 minutes after the first boat that sails the course finishes will be scored DNF. This changes RRS 35.

9. PROTESTS

Protests and requests for redress shall be delivered to the Race Committee within one hour after the race committee signal boat docks. Competitors intending to file a protest or request for redress shall advise the Race Committee as soon as practicable after finishing. The protest time limit and a list of protests and requests received will be posted on the notice board. Hearings will be held as soon as possible after racing each day in the clubhouse boardroom.

10. RADIO COMMUNICATION:

A boat shall neither make radio transmissions while racing nor receive radio communications not available to all boats. This restriction also applies to mobile telephones, but does not apply to any communication received or transmitted to request or render assistance to a vessel in distress.

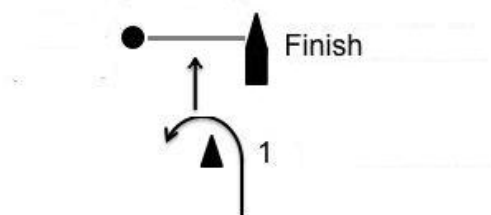
11. SCORING: See the NOR.

12. PRIZES: See the NOR.

13. DISCLAIMER OF LIABILITY:

Competitors participate in the regatta entirely at their own risk. See RRS 4, "Decision to Race", and Registration form. The organizing authority will not accept any liability for material damage or personal injury or death sustained in conjunction with or prior to, during, or after the regatta.

APPENDIX: MARK CONFIGURATIONS AND POSSIBLE COURSES



"W3": Start-1-3-Finish
"W5": Start-1-3-1-3-Finish
"T4": Start-1-2-3-Finish
"O6": Start-1-2-3-1-3-Finish

▲ 2

